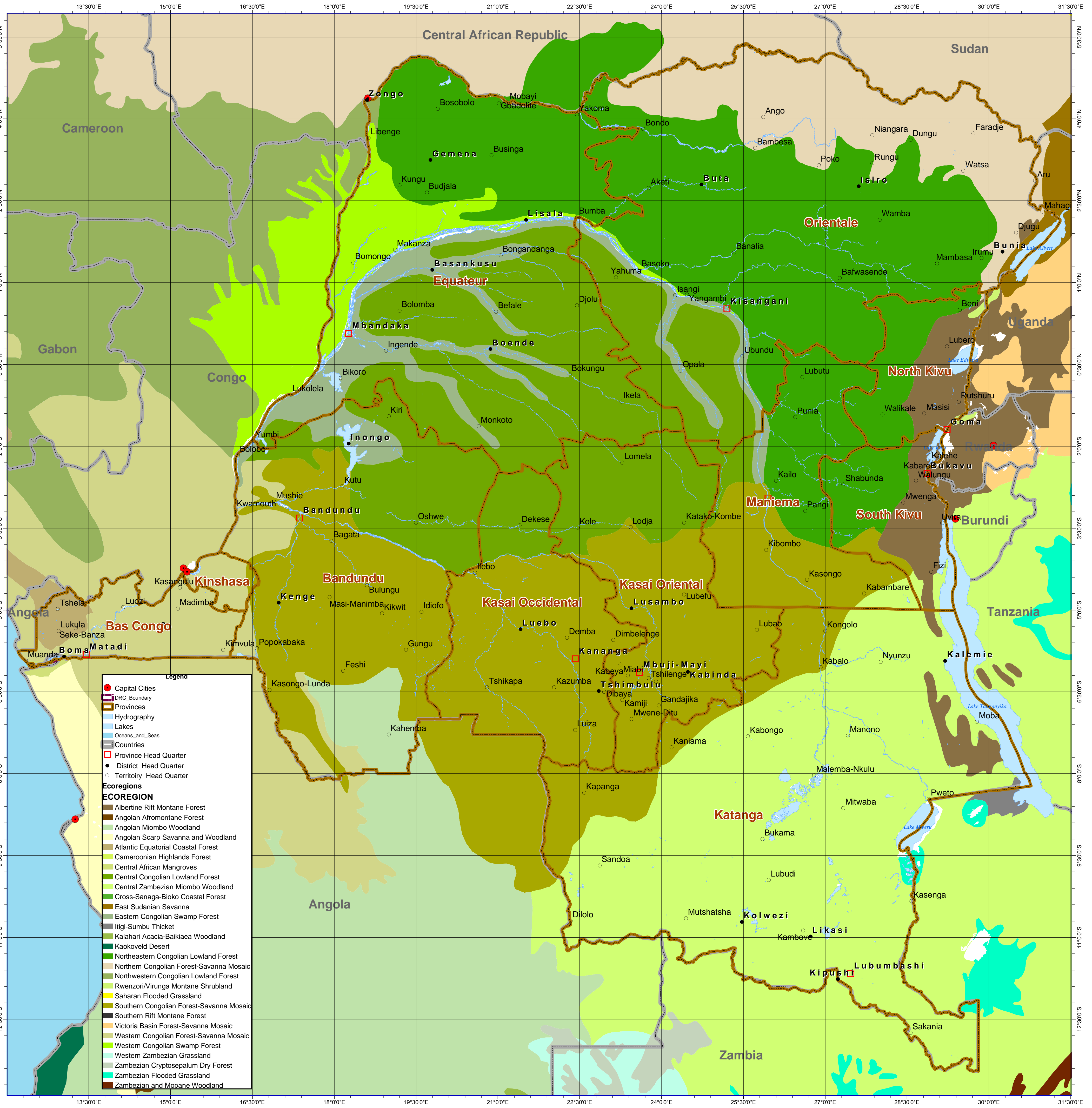


# DEMOCRATIC REPUBLIC OF CONGO

Map No. SP. 114  
GIS UNIT, MONUC

ECOREGIONS  
AFRICA



**Legend**

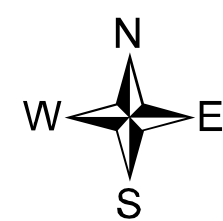
- Capital Cities
- ▭ DRC Boundary
- ▭ Provinces
- ▭ Hydrography
- ▭ Lakes
- ▭ Oceans and Seas
- ▭ Countries
- ▭ Province Head Quarter
- District Head Quarter
- Territory Head Quarter

**Ecoregions**

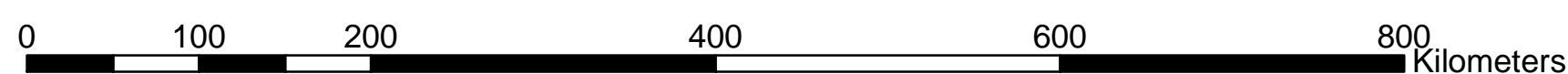
- Albertine Rift Montane Forest
- Angolan Afromontane Forest
- Angolan Miombo Woodland
- Angolan Scarp Savanna and Woodland
- Atlantic Equatorial Coastal Forest
- Cameroon Highlands Forest
- Central African Mangroves
- Central Congolian Lowland Forest
- Central Zambesian Miombo Woodland
- Cross-Sanaga-Bioko Coastal Forest
- East Sudanian Savanna
- Eastern Congolian Swamp Forest
- Itigi-Sumbu Thicket
- Kalahari Acacia-Baikiaea Woodland
- Kaokoveld Desert
- Northeastern Congolian Lowland Forest
- Northern Congolian Forest-Savanna Mosaic
- Northwestern Congolian Lowland Forest
- Rwenzori/Virunga Montane Shrubland
- Saharan Flooded Grassland
- Southern Congolian Forest-Savanna Mosaic
- Southern Rift Montane Forest
- Victoria Basin Forest-Savanna Mosaic
- Western Congolian Forest-Savanna Mosaic
- Western Congolian Swamp Forest
- Western Zambesian Grassland
- Zambesian Cryptosepalum Dry Forest
- Zambesian Flooded Grassland
- Zambesian and Mopane Woodland

## ECOREGIONS

Source : - USGS Digital atlas  
- DATUM WGS 84  
Updated and compiled by GIS Unit MONUC HQ-Kinshasa.



1:4,000,000



UNITED NATIONS  
MONUC - DPKO  
GIS UNIT

For additional copies and information,  
contact: GIS Unit MONUC HQ Kinshasa.

Date: 06 October 2003

©MADECOREGIONS.mxd

